

## PATIENT MEDICAL HISTORY

Male  
47 years old  
Non-smoker

Failed apicectomy 12 years ago. Tooth has been intermittently painful with labial swelling. Patient has large incisive foramen

Case from Dr Dominic O'Hooley,  
United Kingdom



 Dr Dominic O'Hooley



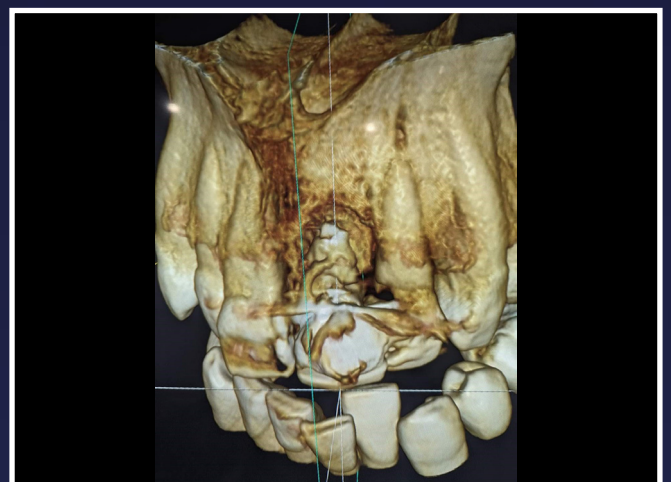
1. Initial situation



2. Showing ridge form

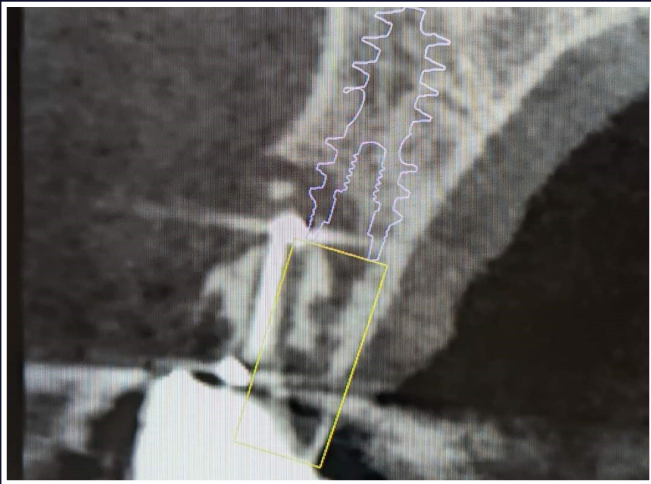


3. CT slice showing extent of defect

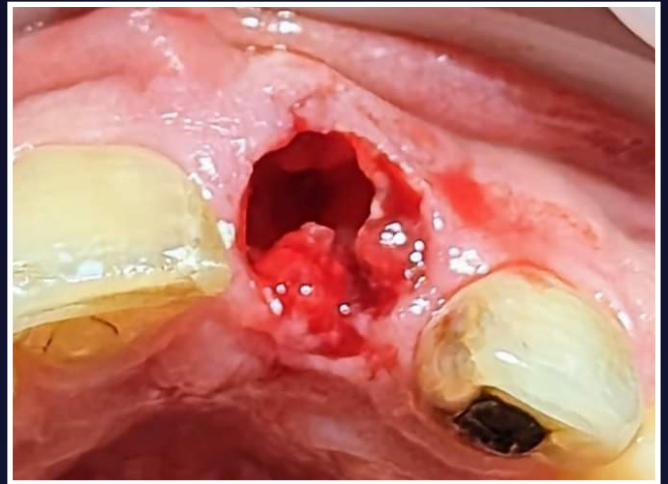


4. CT render showing tooth not in bone

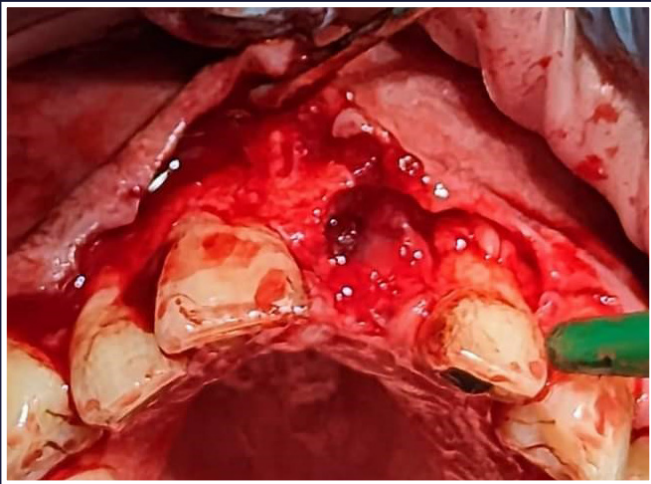
## Immediate Placement and Load for Compromised Incisor



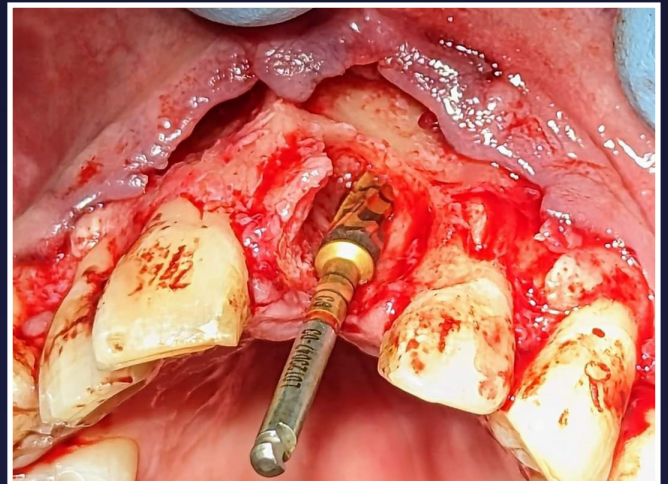
5. CT slice showing proposed implant placement



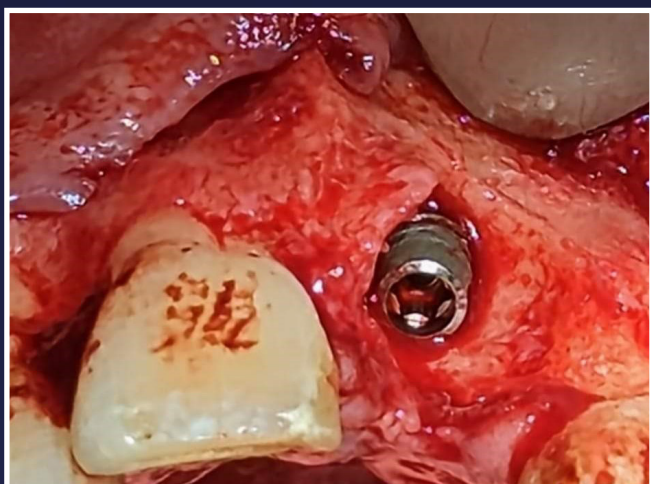
6. Tooth removed large granuloma visible



7. Flap raised to view defect



8. Post defect degranulation - Versah Drill used to create osteotomy

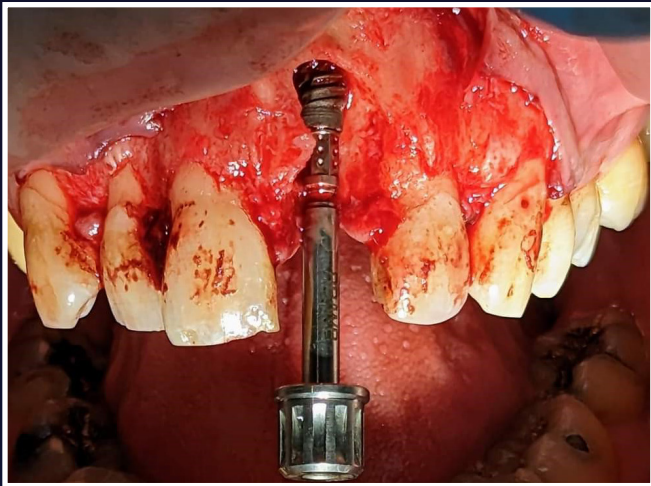


9. Straumann BLX implant placed

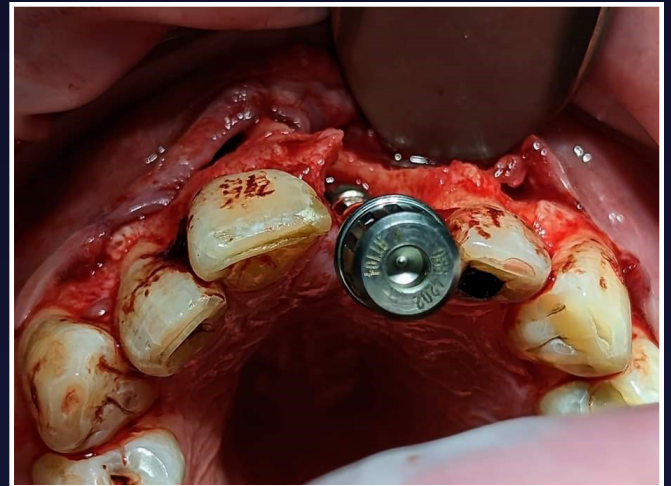


10. Showing depth of placement

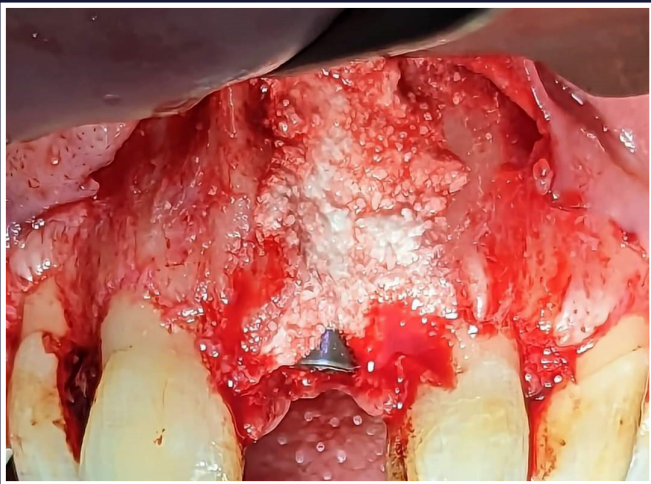
## Immediate Placement and Load for Compromised Incisor



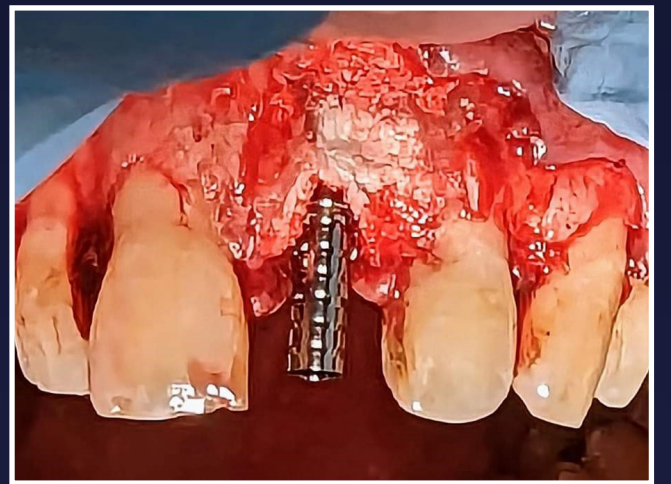
11. Showing emergence angle to avoid incisive foramen



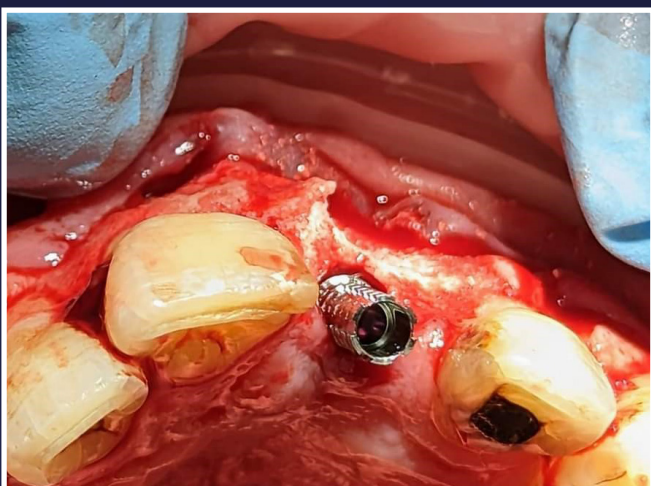
12. Showing emergence angle to avoid incisive foramen



13. First tranche of EthOss® bone grafting material placed



14. Showing emergence angle to allow screw

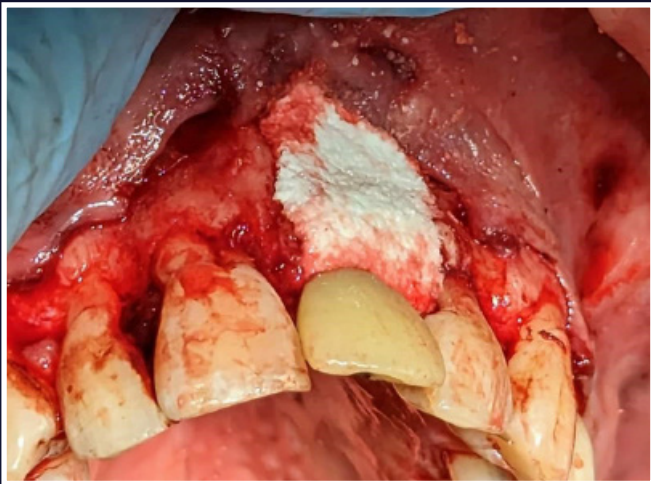


15. Showing need for second tranche of EthOss® bone grafting material

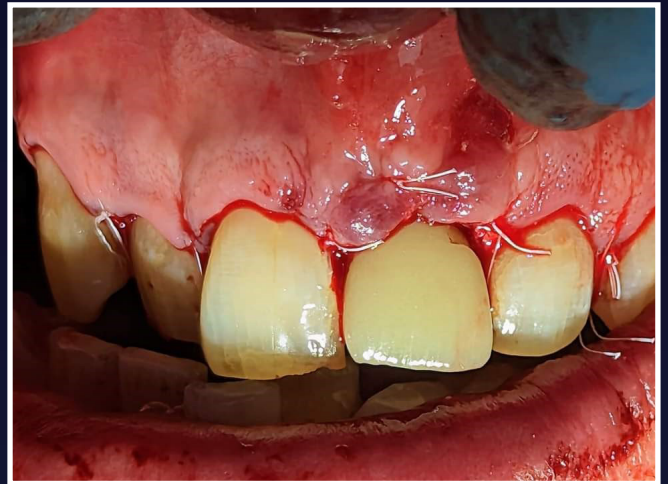


16. Try in of shell crown

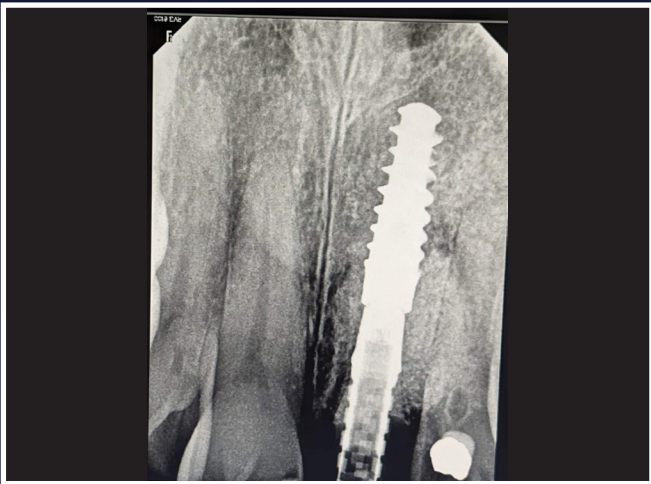
## Immediate Placement and Load for Compromised Incisor



17. Second tranche of EthOss® bone grafting material placed post fitting shell crown



18. Sutured post shell crown fitting



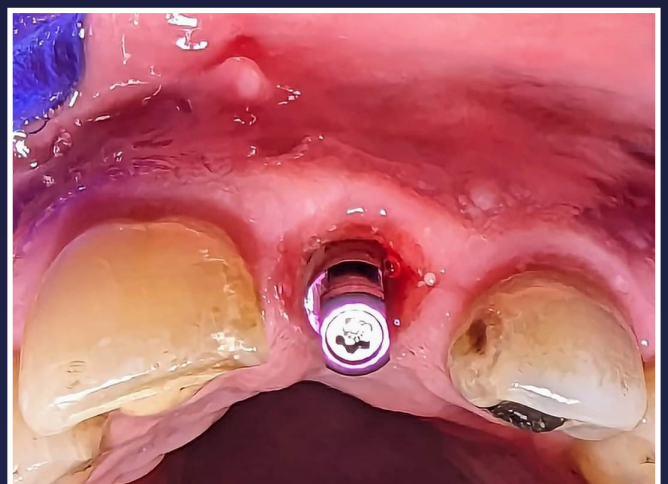
19. Immediate post placement radiograph



20. 8 week review

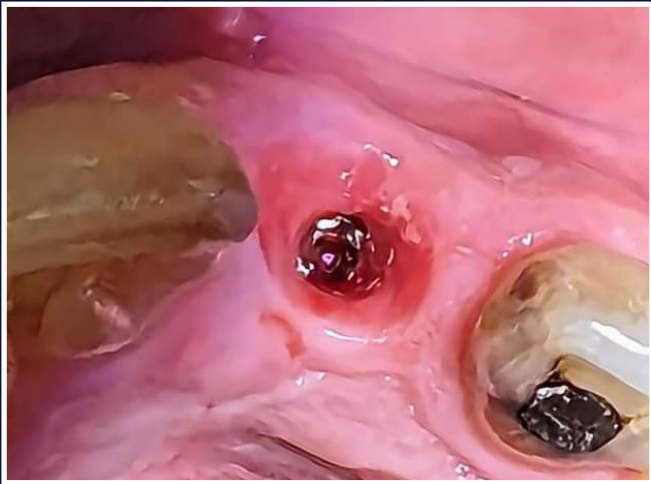


21. Showing ridge form at 8 weeks post placement



22. Showing impression coping 12 weeks post placement

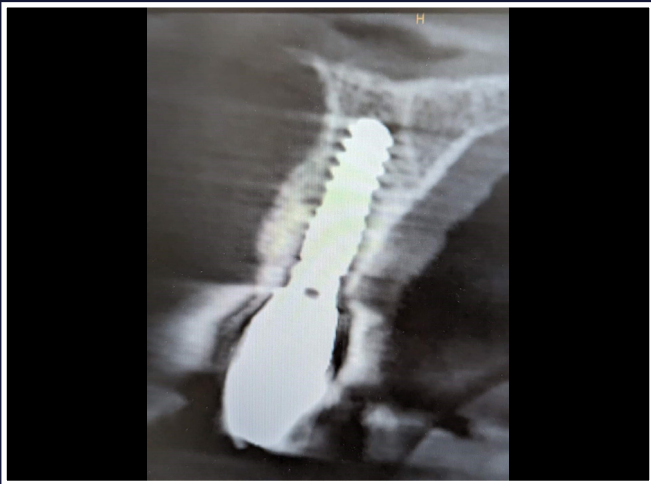
## Immediate Placement and Load for Compromised Incisor



24. Gingival collar



25. Permanent crown fitted



25. Collar at 12 weeks post placement